

Part 1. Hardware Setup.....



Step 1: Connect the power cord to device and wall outlet.



Step 2: Connect the router power plug to an outlet.



Step 3: Connect LAN cable from Router. The internet LED will blink to show internet is on-line.



Step 4: Press and hold (2 seconds) UIS On/Off button to activate internet protection.

! Press UIS on/off only when Internet LED is blinking.
All assigned sites must have responded for auto reset function to work.

Part 2. Description



Detachable IEC socket main power cord

Fuse box (spare 10A fuse inside)

LAN port

Reset button

USB charging port 5V, 500mA



Outlet buttons, long press On/Off (Default: On)

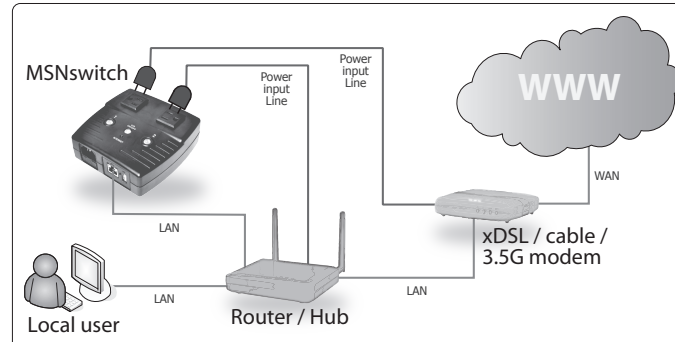
UIS ON/OFF button

Internet Green LED indicator

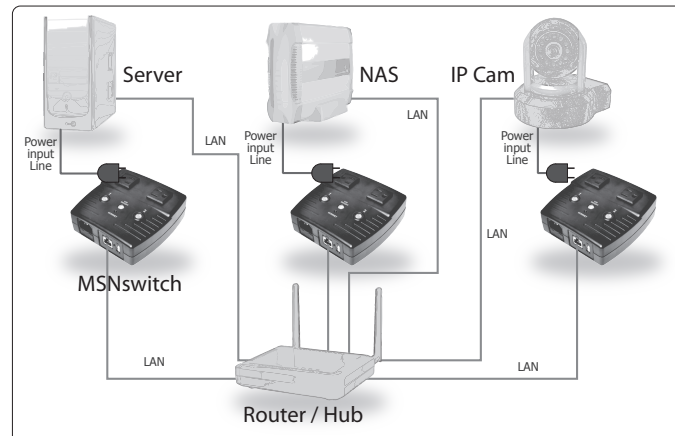
Green LED indicator	Description
Blinking	At least one IP address has timeout
ON	Internet is online
OFF	No internet connection

! To Reset to Factory Default: Press UIS On/Off, Outlet 1 and Outlet 2 button for a few minutes. All three LED light will blink, release buttons.

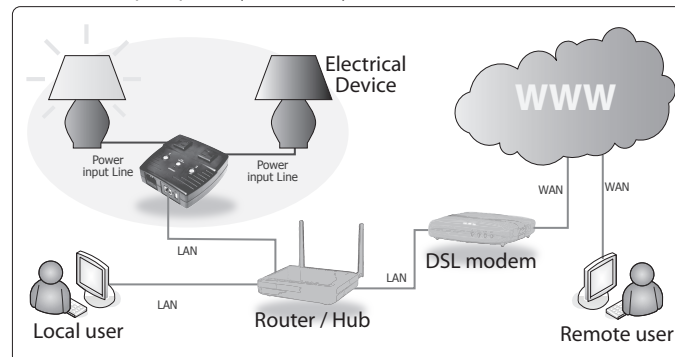
Usage #1: MSNswitch setup to perform automatic reset of router and modem. No software setup required (see Part 1).



Usage #2: MSNswitch setup as watch-dog to keep internet device alive. Software setup required (see Part 3).



Usage #3: MSNswitch setup to remote control electrical devices. Software setup required (see Part 3).



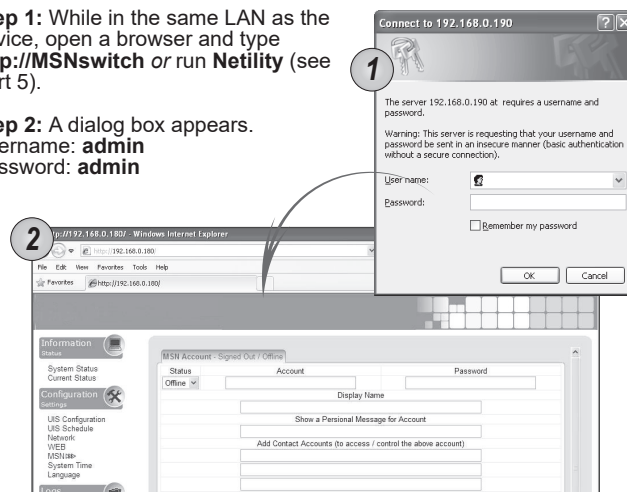
Part 3: Software & Web Setup.....

For advanced user, MSNswitch can be customized for alternate usage and configured for remote access.

To access the Web User Interface for customization;

Step 1: While in the same LAN as the device, open a browser and type **http://MSNswitch** or run **Netility** (see Part 5).

Step 2: A dialog box appears. Username: **admin** Password: **admin**



rev. 6406

For the latest firmware updates, please visit <http://www.MSNswitch.com>



For model: UIS-522b

Quick Installation Guide